

Rubber Disc Check Valves

Rubber Disc Check Valve comes with is a fully encapsulated resilient disc seat, double flange swing check valve for reliable reverse flow prevention, good for both clean water and sewage applications. The seat is fixed at 40° indication to help quick closure and minimize the water hammer and slamming.



Design Features:

- ✳ Double flange design, the disc is made up of carbon steel plate, steel bar shaft and nylon reinforced fabric.
- ✳ The rubber disc is totally encapsulated in EPDM or NBR rubber for superior sealing and corrosion resistance.
- ✳ Nylon fabric is inserted into the disc for strengthening and preventing it from cracking and breaking during operations.
- ✳ Much shorter strike to minimize water hammer and water slamming.
- ✳ The flap disc rises above the flow profile reducing possible wear and damage.
- ✳ All iron parts are coated inside & outside with fusion bonded epoxy for corrosion resistance per AWWA C550.
- ✳ Simple design, top entry cover allows for access for cleaning, replacement and maintenance easy.
- ✳ Valve are certified NSF61 for Drinking Water and NSF72 for Lead Content.

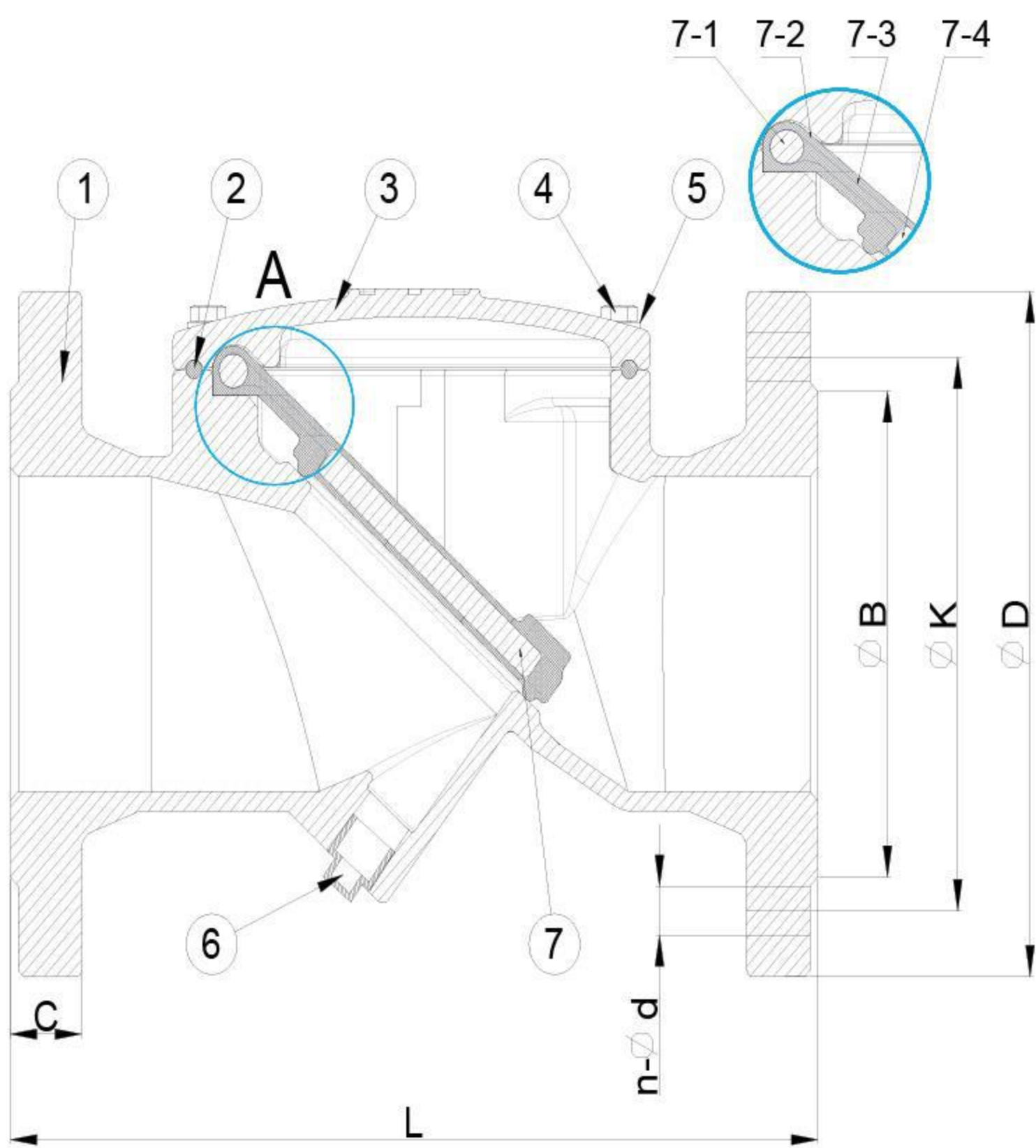
Typical Applications:

General Water Supply, Fire Fighting, HVAC, District Cooling & Sewage System

Technical Data:

Design Standard:	AWWA C508
Size Range:	2" – 24"
Pressure Rating:	200 psi
Working Temperature:	-10°C – 80°C
End Connection:	ANSI B16.1 / B16.5
Face-to-Face:	AWWA C508
Test & Inspection:	AWWA C508 / API 598

Rubber Disc Check Valves



Parts List & Materials

No.	Parts Name	Materials	Standard
1	Body	Ductile Iron	ASTM A536
2	O-Ring	Rubber	NBR
3	Bonnet	Ductile Iron	ASTM A536
4	Bolt	Stainless Steel	ASTM A307
5	Washer	Stainless Steel	SS304
6	Plug	Stainless Steel	SS304
7	Disc	Carbon Steel + Rubber	ASTM A216 WCB + EPDM
7-1	Hinge Pin	Stainless Steel	ASTM A276 T304
7-2	Lining	Rubber	EPDM
7-3	Reinforcement Fabric	Nylon	Commercial
7-4	Disc Plate	Steel	Commercial

✦ Item no. 6 (optional).

Main Dimensions

unit: inch

NPS	L	ØB	ØD	ØK	N-Ød	C
2"	8	3 5/8	6	4 3/4	4 - 3/4	5/8
2 1/2"	8 1/2	4 1/8	7	5 1/2	4 - 3/4	11/16
3"	9 1/2	5	7 1/2	6	4 - 3/4	12/16
4"	11 1/2	6 1/4	9	7 1/2	8 - 3/4	15/16
5"	13	7 1/4	10	8 1/2	8 - 7/8	15/16
6"	14	8 1/2	11	9 1/2	8 - 7/8	1
8"	19 1/2	10 5/8	13 1/2	11 3/4	8 - 7/8	1 1/4
10"	24 1/2	12 3/4	16	14 1/4	12 - 1	1 1/4
12"	27 1/2	15	19	17	12 - 1	1 1/4
14"	31	16 1/4	21	18 3/4	12 - 1 1/8	1 2/4
16"	36	18 1/2	23 1/2	21 1/4	16 - 1 1/8	1 2/4
18"	36	21	25	22 3/4	16 - 1 1/4	1 2/4
20"	38 1/2	23	27 1/2	25	20 - 1 1/4	1 3/4
24"	43 1/4	27 1/4	32	29 1/2	20 - 1 3/8	2

unit: mm

DN	L	ØB	ØD	ØK	N-Ød	C
50	203	92.1	152	120.7	4 - 19	15.9
65	216	104.8	178	139.7	4 - 19	17.5
80	241	127	191	152.4	4 - 19	19
100	292	157.2	229	190.5	8 - 19	23.9
125	330	185.7	254	215.9	8 - 22	23.9
150	356	215.9	279	241.3	8 - 22	25.4
200	495	269.9	343	298.5	8 - 22	28.6
250	622	323.8	406	362	12 - 25	30.2
300	699	381	483	431.8	12 - 25	31.8
350	787	412.8	533	476.3	12 - 29	35
400	914	469.9	597	539.8	16 - 29	36.6
450	914	533.4	635	577.9	16 - 32	39.7
500	978	584.2	699	635	20 - 32	42.9
600	1098	692.2	813	749.3	20 - 35	47.7